

THE COLLECTION SERIES



TRAILSIDEHOMES™

Cascade

CONTEMPORARY ELEVATION
(with living above garage)



2,453 - 3,496 SF



4 - 6



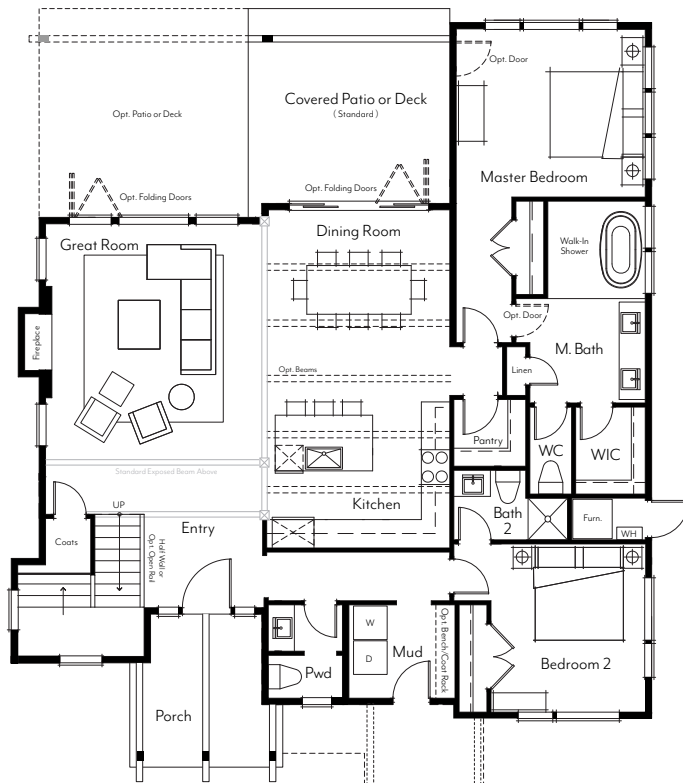
4.5 - 5.5



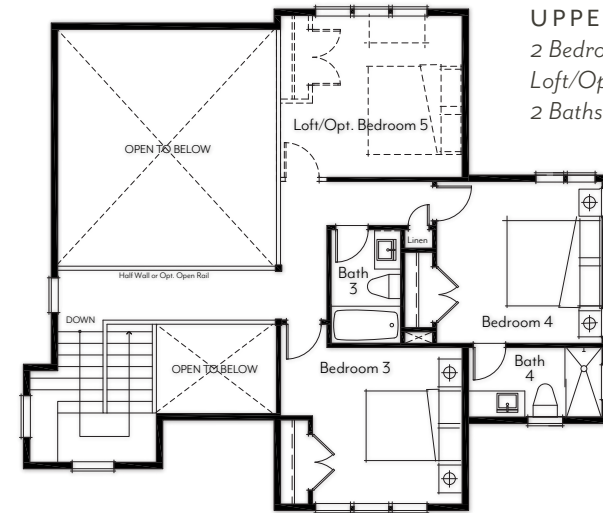
2 STORIES



2-CAR

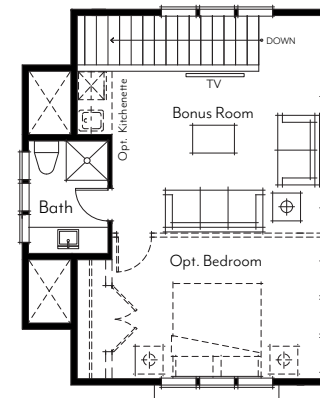


MAIN LEVEL
 2 Bedrooms
 2.5 Baths
 Covered Entry
 Covered Rear Patio

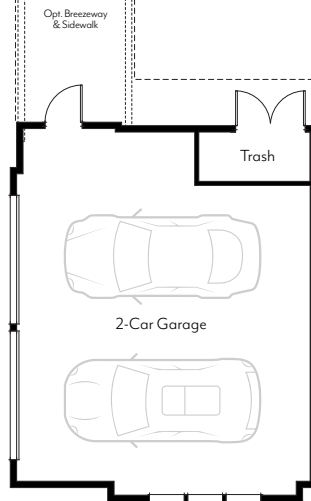


UPPER LEVEL
 2 Bedrooms
 Loft/Opt. Additional Bedroom
 2 Baths

OPT. GARAGE WITH LIVING ABOVE
 Standard 3/4 Bath
 Optional Kitchenette
 & Bedroom



GARAGE
 Trash Enclosure
 Opt. Breezeway & Sidewalk



CASCADE HIGHLIGHTS :

- 2,453 to 3,496 livable square feet plus garage
- 4 to 6 bedrooms
- Loft and rec room options available
- 4-1/2 to 5-1/2 bathrooms
- Great entertaining home with an optional wall of folding glass doors
- Convenient main floor master
- Main floor second bedroom, ensuite
- Gourmet kitchen options
- Optional living space above garage
- Oversized 2-car garage

TRAILSIDEHOMES™

TRAILSIDEHOMES.COM | (206) 388-3121 | DISCOVER@TRAILSIDEHOMES.COM

Plans and elevations are artist's renderings only, may not accurately represent the actual condition of a home as constructed, and may contain options which are not standard on all models. We reserve the right to make changes to these floor plans, specifications, dimensions, designs and elevations without prior notice. Stated dimensions and square footage are estimated and should not be used as representation of the home's actual size. Information current as of 11/5/21

