

# THE RIDGELINE SERIES



**TRAILSIDEHOMES™**

*Highmark*



2,038 - 3,192 SF



3 - 5



2.5 - 4.5



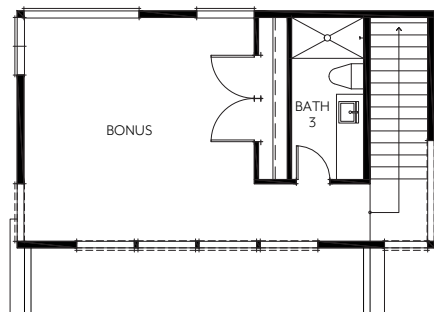
1 STORY  
(Optional upper & lower floors)



2-CAR

## UPPER LEVEL

Optional Live Space above Garage



## MAIN LEVEL

(garage left)



## LOWER DAYLIGHT LEVEL

Optional



## HIGHMARK HIGHLIGHTS :

- 2,038 to 3,192 livable square feet plus garage
- 3 to 5 bedrooms
- 2 1/2 to 4 1/2 bathrooms
- Soaring walls of glass in great room
- Convenient main floor primary
- Second floor primary
- Gourmet kitchen options
- Optional living space above garage
- Oversized 2-car garage

**TRAILSIDEHOMES™**

TRAILSIDEHOMES.COM | (206) 388-3121 | DISCOVER@TRAILSIDEHOMES.COM

Plans and elevations are artist's renderings only, may not accurately represent the actual condition of a home as constructed, and may contain options which are not standard on all models. We reserve the right to make changes to these floor plans, specifications, dimensions, designs and elevations without prior notice. Stated dimensions and square footage are estimated and should not be used as representation of the home's actual size. Information current as of 5/1/22

